



Pink[®] Batts[®] SnugFloor[®] Insulation

Product and Installation Guide

Pink® Batts® SnugFloor® Insulation

Product and Insulation Guide

Product Specifications

PRODUCT GLASS WOOL RANGE	Product Code	Size (mm)	Nominal Stabilised Thickness (mm)	Nominal Total Area Per Bale (m ²)	Approx. Coverage Per Bale* (m ²)	Eco Choice Aotearoa	Environmental Product Declaration	BRANZ Appraisal Number
FLOOR – ACOUSTIC INSULATION								
Pink® Batts® Silencer® Mid Floor†	7310051	1140 x 432	150	4.9	5.2		✓	x
FLOOR – THERMAL INSULATION								
R2.6 Pink® Batts® SnugFloor® Narrow†	7131451	1220 x 480	110	8.8	8.2	✓	✓	632
R2.6 Pink® Batts® SnugFloor® Wide†	7131601	1220 x 580	110	10.6	10.6	✓	✓	632
R3.2 Pink® Batts® SnugFloor® Narrow†	7134832	1220 x 480	140	8.2	7.7	✓	✓	632
R3.2 Pink® Batts® SnugFloor® Wide†	7135832	1220 x 580	140	8.5	8.5	✓	✓	632

Application

Pink® Batts® SnugFloor® insulation is a lightweight flexible glass wool insulation product designed to:

- Reduce heat loss in new and existing homes with suspended floors
- Eliminate draughts through exposed floorboards
- Assist in meeting the requirements of the New Zealand Building Code (NZBC) for different designs and environments

Features and Benefits

- High R-values – R-values up to R3.2 to assist in keeping homes above 18°C as per the World Health Organisation's recommendation for a healthy and comfortable home
- Easy to install – lightweight, flexible and simple design makes the installation fast and easy
- Internationally certified for Indoor Air Quality – gives assurance that products meet strict chemical emissions limits
- Non-combustible – will not easily burn in the event of a fire
- Made from over 80% recycled glass-making sustainable use of waste
- Designed for New Zealand building conditions

* Coverage relates to standard structures (ie with framing allowance) therefore actual coverage may vary.

† Product does not have Lifetime Warranty.

Pink® Batts® SnugFloor® Insulation

Product and Insulation Guide

Environment

Pink® Batts® insulation is a sustainable and energy efficient product.

- Manufactured using over 80% recycled glass, making sustainable use of waste
- Energy used during the manufacture of Pink® Batts® products is offset by the energy saved by a home fully insulated with Pink® Batts® products within 3-15 months¹
- Manufactured in New Zealand, reducing shipping distances
- Recyclable packaging

Green Star NZ Credits

Green Star is a comprehensive environmental rating system for buildings; materials with certain attributes can receive points that contribute to the overall score of a rated home.

New Zealand Green Building Council (NZGBC) does not test or certify products; they rely on the work done by third party certification bodies and eco labels like Eco Choice Aotearoa. Further information is available at nzgbc.org.nz.

Eco Choice Aotearoa

Pink® Batts® SnugFloor® insulation products have Eco Choice Aotearoa New Zealand Accreditation (refer to Product Specifications on page 1 for accredited products)

Independently assessed for:

- **Waste Minimisation:** Recycled content, and recycling of process waste
- **Energy Management:** Effective energy management policies and procedures
- **Manufacturing Process:** Not manufactured using blowing agents with a Global Warming Potential (GWP) or Ozone Depleting Potential (ODP)
- **Product Characteristics:** Durability and performance



While only BRANZ appraised products are eligible for Eco Choice Aotearoa, all Pink® Batts® thermal insulation products are manufactured in the same environmentally considerate way.

¹ (Beca Carter Hollings & Ferner Ltd, Energy Economics of Fibreglass Insulation, 2005)



Pink® Batts® SnugFloor® Insulation

Product and Insulation Guide

Health and Safety

Product Safety

Pink® Batts® insulation is a non-hazardous, safe product.

- IARC (International Agency for Research on Cancer) classifies the glass wool formulation used to manufacture Pink® Batts® products as Group 3: 'Not classifiable as to its carcinogenicity to humans'. This is the same classification as caffeine, tea, hair colouring, chlorinated drinking water and saccharin
- Pink® Batts® insulation is bio-soluble. In the unlikely event any fibres are inhaled into the lungs they will dissolve in the body fluids and be cleared from the body

Indoor Air Quality

- Pink® Batts® insulation is certified under the GREENGUARD Certification Program. Being certified for indoor air quality gives an assurance that products meet strict chemical emissions limits (including minimal levels of VOCs and formaldehyde), to help create healthier indoor environments

General Health

- Pink® Batts® insulation will assist in meeting the World Health Organisation recommendation for houses to be maintained at a minimum temperature of 18°C to provide a healthy and comfortable home
- A Wellington School of Medicine study found insulated houses resulted in families with fewer sick days and the economic benefit was double the initial cost of the insulation²

² Howden-Chapman, P. et al. "Effect of insulating existing houses on health inequality: cluster randomised study in the community" British Medical Journal, 2007, p334:460

Technical Data

Properties	Result		Test/Method/Standard	Test Results
Combustibility	Non-Combustible	✓	AS/NZS 1530.1:1994	Group Number 1S
Early Fire Hazards		✓	AS/NZS 1530.3:1993 - Ignitability (Range 0-20) - Spread of Flame Index (Range 0-10) - Heat Evolved Index (Range 0-10) - Smoke Developed Index (Range 0-10)	= 0 = 0 = 0 = 0-1
R-value	Various*	✓	AS/NZS 4859.1:2018	
Corrosion	Non-Corrosive	N/A	AS/NZS 4859.1:2018-Glass wool exempt	
Moisture Absorption	Non-Hygroscopic	N/A	AS/NZS 4859.1:2018-Glass wool exempt	
Vermin Resistance	No Food Source	✓	AS/NZS 4859.1:2018-Glass wool exempt	

* Stated thicknesses are values at which stated R-values are achieved and are likely to be minimum values. See table on page 1.



Pink® Batts® SnugFloor® Insulation

Product and Insulation Guide

Acoustic Properties

Pink® Batts® insulation will assist with noise control, however penetrations in ceilings and walls will transmit sound readily. Superior noise control can be achieved by using Pink® Batts® insulation products in conjunction with good acoustic design.

New Zealand Building Code (NZBC) and Limitations

Pink® Batts® SnugFloor® insulation when used, installed and maintained in accordance with the requirements outlined in this datasheet, will meet or contribute to meeting the following provisions of the NZBC:

NZBC Clause B2: Durability

Meets the requirement NZBC B2.3.1 a) 50 years and NZBC B2.3.1 b) 15 years

NZBC Clause E3: Internal Moisture

Contributes to meeting these requirements

NZBC Clause F2: Hazardous Building Materials

Meets this requirement and will not present a health hazard to people

NZBC Clause H1: Energy Efficiency

Contributes to meeting this requirement

Limitations

To meet the provisions of the NZBC as outlined in this datasheet, Pink® Batts® SnugFloor® insulation MUST be:

- Installed and maintained in a dry protected environment
- Installed in a building where the provisions of NZBC E2 and E3 are met
- Installed to the requirements of NZS 4246:2016: Energy Efficiency-Installing bulk thermal Insulation in Residential Buildings

Pink® Batts® SnugFloor® insulation should NOT be crushed or compressed unless otherwise stated.

Pink® Batts® SnugFloor® Insulation

Product and Installation Guide

Installation Instructions

Correct installation with no compression or gaps is critical to ensure Pink® Batts® SnugFloor® insulation performance is not compromised.

Safety

Each installation is unique, so prior to installation check for all hazards that may cause injury.

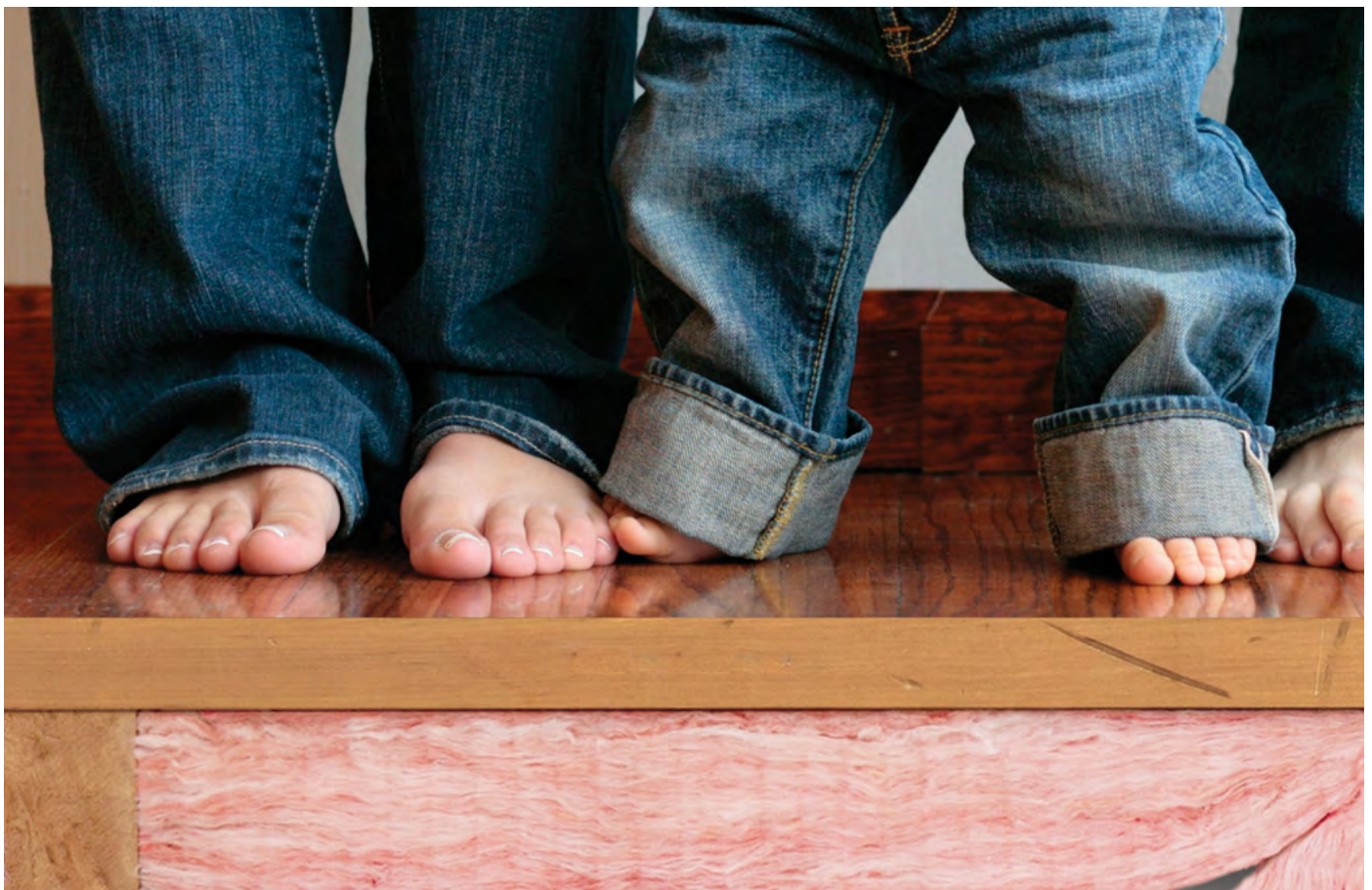
- Carry out repair work without delay
- Ensure there is adequate lighting to identify any hazards
- Treat all electrical cables as live
 - turn power off when working underfloor
 - ensure damaged, exposed or hanging cables are repaired immediately
 - be careful not to cut or expose cables and wires
 - when stapling/strapping insulation, leave a 50mm gap between staples and electrical cables
 - use labels to identify location of wires, pipes and cables for future reference

- Beware of other sharp objects (protruding nails, splinters etc.), pests (bees and wasps, animals and vermin).

Note: Seek professional advice if you're unsure how best to isolate the hazard or have a professional installer carry out the work for you.

We recommend PinkFit® professional installers. PinkFit® are a nationwide network of professional installers who guarantee their completed installation will meet the requirements of NZS 4246:2016.

For your local PinkFit® installer call **0800 746 534** or visit pinkbatts.co.nz/installing-pink-batts/



Pink® Batts® SnugFloor® Insulation

Product and Installation Guide

Installation

Any slight irritation to exposed skin caused by the fibres in glass wool, or through their inhalation, is harmless and temporary.

However, for your comfort while installing, it's recommended you wear:

- Loose fitting work clothes which cover the arms and legs
- Covered shoes
- Dust mask
- Safety glasses

For safety while installing, it's recommended you use:

- Cut resistant gloves (if knife is used)
- Knee pads

For an efficient installation, the following tools are recommended:

- Knife
- Torch
- Danband or similar strapping (>20mm wide)
- Staple gun with 10 mm galvanised staples
- Tape measure

Pre-work checklist

Before commencing installation ensure:

- Mains power switch is off
- Underfloor area has adequate working space and lighting
- No signs of water seepage beneath bathroom floors (and other wet areas)
- Repair damaged plumbing or sewer work
- Underfloor area is dry with adequate ventilation
- If wet or damp install a polyethylene groundsheet (Moistop® 250 Underlay)

Choosing the right product

Joist spacing	Pink® Batts® SnugFloor® Narrow	Pink® Batts® SnugFloor® Wide
Less than 450mm	✓	
Between 450mm and 550mm		✓
Greater than 550mm*		✓*

*Product should be installed lengthwise across joists and surplus trimmed

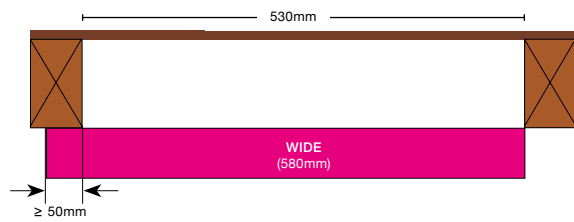
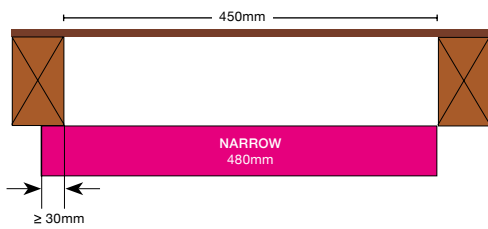


Pink® Batts® SnugFloor® Insulation

Product and Installation Guide

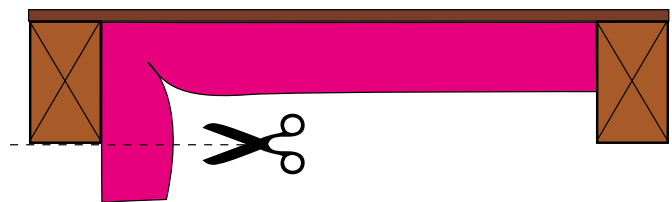
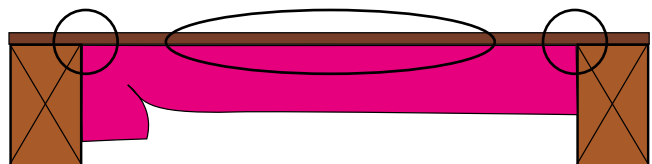
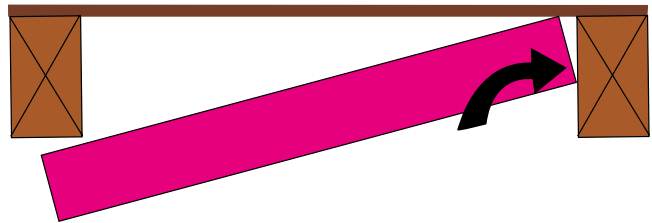
A. Fitting detail

- Open the pack before entering underfloor area. The compressed product will expand substantially
- Start installing at the point furthest from the access point and work back towards it
- Fit width-wise between joists ensuring that there is the required overlap:
 - Pink® Batts® SnugFloor® Narrow $\geq 30\text{mm}$
 - Pink® Batts® SnugFloor® Wide $\geq 50\text{mm}$
- If overlap is insufficient, use wider product or fit pieces length wise between joists.



B. Fold detail

- Insert one side of the Pink® Batts® SnugFloor® segment against the joist.
- Push the other side of the segment onto the opposing joist with a fold to create a friction fit.
- Ensure there are no gaps in corners and under the floor boards.
- The fold must not extend beneath the joist, trim if required.
- Insulate out to under the bottom plate of the exterior wall.

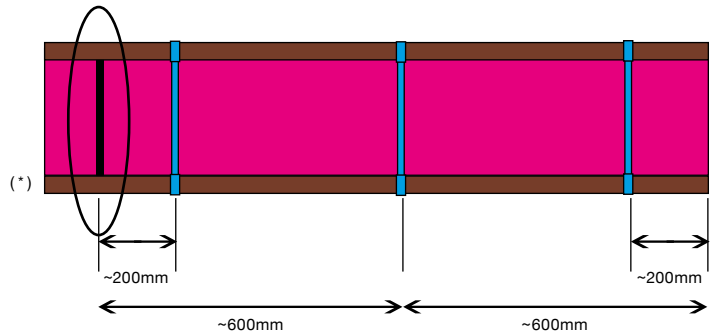


Pink® Batts® SnugFloor® Insulation

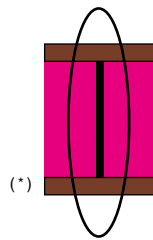
Product and Installation Guide

C. Secure detail

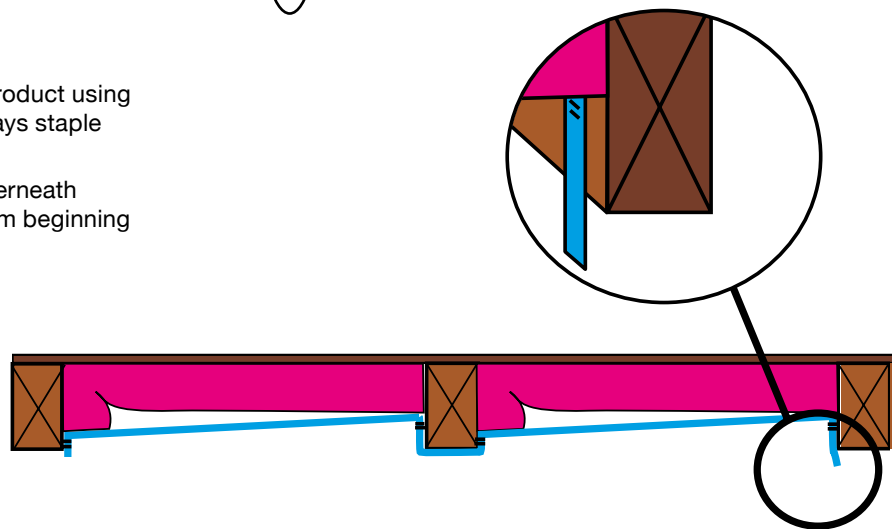
- Secure using no less than three straps per piece; in the middle of the segment and approx. 200mm from each end.



- Ensure adjoining pieces are butted together with no gaps (*).



- Strap up the joists and against the product using two staples at each fixing point. Always staple across the tape to avoid tearing.
- There is no need to cut the tape underneath each joist. One length can be run from beginning to end.



When installing around electrical cables ensure that you have a clear view of the joist face. Avoid stapling close to electrical wires.

- *Caution:** Electrical cables and equipment partially or completely surrounded with bulk thermal insulation may overheat and fail. This applies to wiring installed prior to 1989.

Tip: To verify Building Code Compliance, staple a product label at an easy to find location away from any hot items such as down lights or water cylinders e.g. on truss/rafter above ceiling access hole and hot water cupboard.

Pink® Batts® SnugFloor® Insulation

Product and Insulation Guide

Storage and Maintenance

Pink® Batts® SnugFloor® should be protected from damage and weather. Store under cover in clean dry conditions. The installed product must remain dry at all times. If the product becomes wet or damp, the source of dampness should be repaired and any wet or damp insulation should be removed and replaced with new insulation of an equivalent R-value.

Note: Installing any underfloor insulation in your home with the addition of a dry heat source can create a warm, dry environment. This may lead to the drying out of unsealed timber floors.

Disposal of bags

Recyclable LLDPE bags are used for packaging of Pink® Batts® insulation.
For further details download the relevant product data sheet from pinkbatts.co.nz





Comfortech Building Performance Solutions®
Certified QMS



pinkbatts.co.nz

0800 746 522

The colour PINK and Pink® are registered trademarks of Owens Corning used under license by Tasman Insulation New Zealand Ltd trading as Comfortech Building Performance Solutions®. Batts®, Superbatts®, SnugFloor® and Ultra® are registered trademarks of Comfortech®. This document supersedes all previous versions and may have been superseded; is a guide only and the purchaser should ascertain the suitability of this product for the end-use situation intended and when used in conjunction with other products; and is provided without prejudice to Comfortech® standard terms of sale. Comfortech® retains the right to change specifications without prior notice. Refer to www.pinkbatts.co.nz or consult Comfortech® for further information. Do not use this product for any application not detailed in this document. All claims about this product are subject to any variation caused by normal manufacturing process and tolerances. The liability of Comfortech® and its employees and agents for any errors or omissions in this document or otherwise in relation to the product is limited to the fullest extent permitted by law. Except where the consumer acquires the goods for the purposes of a business, any rights a consumer may have under the Consumer Guarantees Act are not affected.

9-15 Holloway Place, Penrose, Auckland

June 2023

